

Find this symbol on the map, **Δ** and match the number with the description. Each object is created by artists from the region, or is historically significant, causing many to enjoy a contemplative moment.

1 A treasure of Texas musical history, the “Raisin” organ is permanently loaned to the MAC by Drs. Susan Ferre and Charles Lang. Built in the early 1700’s in Switzerland and moved to Raising, Texas by a Lutheran minister in 1850, it has been designated by organ scholars as Texas’ earliest organ on record. A truly unique and beautiful addition, the instrument is utilized for pre-concert short recitals (when we can entice a pumper!) as well as for vocal chamber music recitals.

2 Two delightful Lobby I corner mainstays from Dallas artists — “Cirque” by Jeff Green and “Sheet Music” by Terri Stone ..

3 Kansas native and now Mesquite resident, Michael Cross’s woodblock paintings found their permanent home in December 2000. Titled *Maya Haze*, *Storyteller* and *Moonchild*, these works are about nature and our connection to it. “As the titles may suggest, the final appearance of the works may call to mind the forms of trees, forests, the night sky, smoke; even human or animal forms. Each viewer will ‘see’ something unique.”

4 Our Maine bell calls audiences back from interval while they view another triplet of Michael Cross’s beautiful, contemplative abstracts.

5 Another elegant, inspiring piece from Sandi Stein — effectively titled *Rising*. This graceful spire seemed so totally at home during Sandi’s 2001 exhibit that generous patrons assured its permanence. Thank you!

6 Ever changing, the Main and Chamber Galleries offers visual arts enthusiasts a variety of work every three to four weeks. Located at the floating staircase next to the elevator is “February 2008” by Michael Cross.

7 Materials related to the different arts organizations presenting at the Mesquite Arts Center can be found on the kiosk. Please take any of the material that might interest you.

8 Elegant lines and simple, direct colors enhance this polychromed wood mirror — Sandi Stein’s goddess she calls “*Rapture!*.” Art Stokes has created a nostalgic look at Texas Landscapes through the use of infrared film with this collection of photographs. “*Passage*” with its wood body and head, by Jeff Green rounds out the gallery.

9 & 10 Slate, limestone and brick mixtures in finite detail showcase two of Sandi Stein’s delicate miniature sculptures. Meet and greet her *Statue of Liberty* and *Knight of the Magician*.

11 Lucy Creech determined our courtyard holly needed companionship — *Lady of the Pines* loves it here.

12 *Radiance*, by Terri Stone, commissioned by the Mesquite Arts Council, is a tribute to long time arts patron Billie Sparks. The copper plate represents her bright spirit, the 6 attachment points the letters in her name and the upright steel a bar of music.

13 This Hand-Knotted Tapestry, “*Untitled #15*.” Is a collaborative piece done by an Albanian painter and weaver acquired by Michael Cross. Michael Cassidy created and donated the serene and story invoking moment in his black and white photograph *Wild Goose Island*.

14 Following a highly successful exhibit, the Mesquite Quilt Guild donated this delightful piece to grace the east Rehearsal Room wall— a definitive example of the intricacy and grace of this art form.

15 Knowing our desire to keep flora and fauna comforted and secure, Sandi Stein’s wee “watering bowl” assures happiness to our feathered friends’ throats. Adding to the natural beauty of the courtyard is Terri Stone’s *Florida II* (pictured on the front).

16 Memorial pavestones offered during the 1996 construction of this center allowed many friends opportunity to personalize their support. (Close scrutiny will even display several four-legged friends !!)

17 Accessibility to the Concert Hall stage is available at this chair lift in the back stairwell.

18 The Jeann & Ralph Wisenbaker Courtyard was dedicated July 2001 for two long-time arts patrons in Mesquite.

19 *Freedom*, by Terri Stone, was donated by Jeann Wisenbaker February 2002. Tubular steel intertwined and rising above the foliage brings a different texture and a bit of height to the starkness of the wall.

20 Peaceful and serene, *Ophelia*, by Terri Stone, has found the courtyard to be her resting place. The work was acquired by the Arts Council in January 2003.

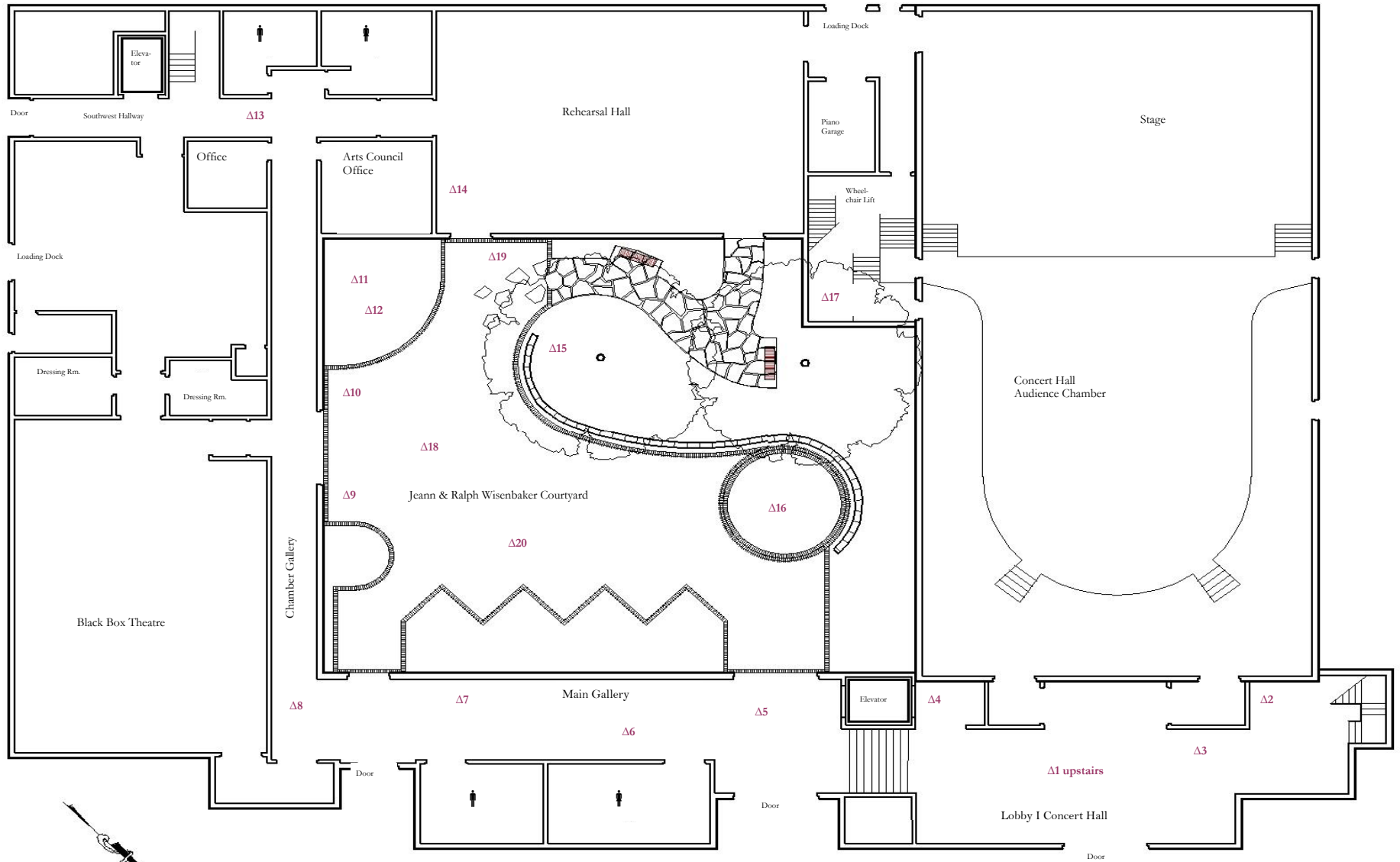
Located near the administrative offices of the Arts Center are three framed pieces by artist Art Stokes and the whimsical piece of found objects by sculptor Jeff Green. These works were acquired by the Mesquite Arts Council.



DISCOVER THE
arts@1527



1527 N. Galloway
Mesquite, TX 75149 • 972-216-6444
www.mesquiteartscenter.org



Mesquite Arts Center Self-Guided Tour
 1527 N. Galloway Avenue—972/216-6444—Mesquite Arts Council

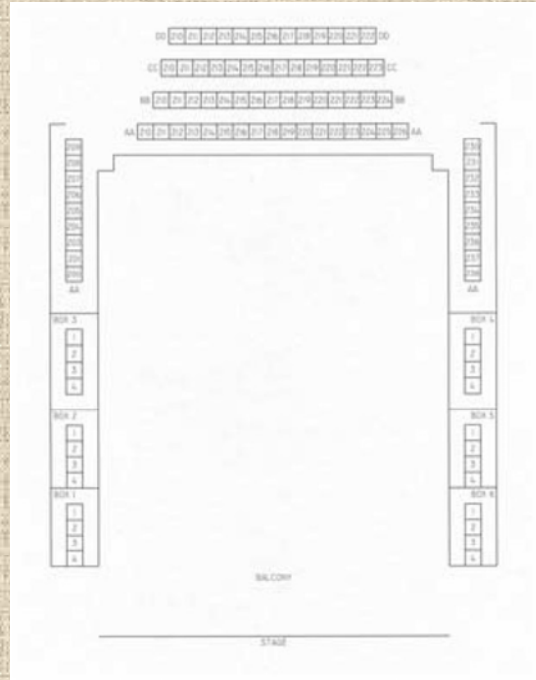
CONCERT HALL SEATING PLAN

AT THE MESQUITE ARTS CENTER

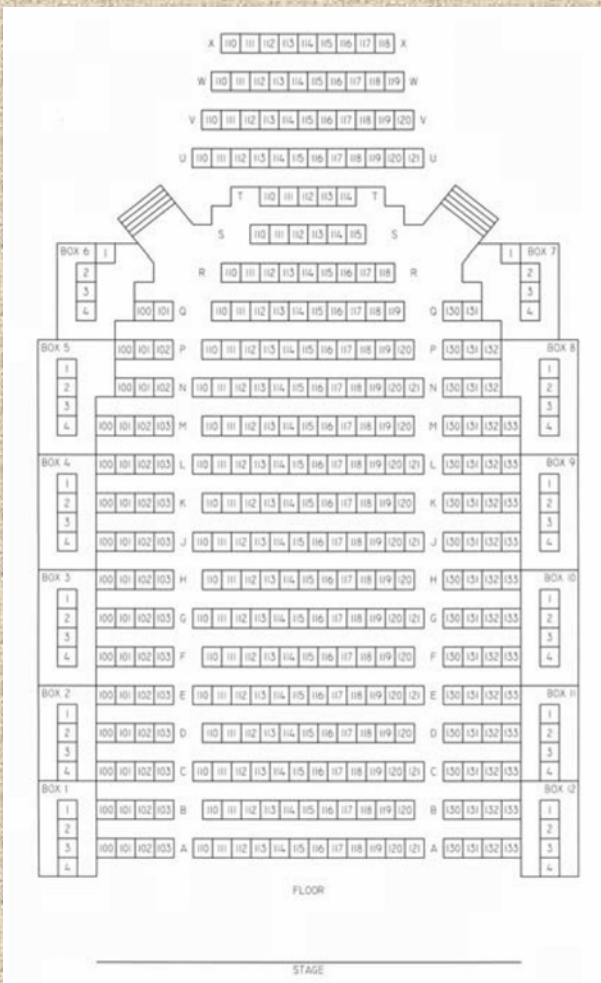


TOTAL OF 500 SEATS

BALCONY SEATING



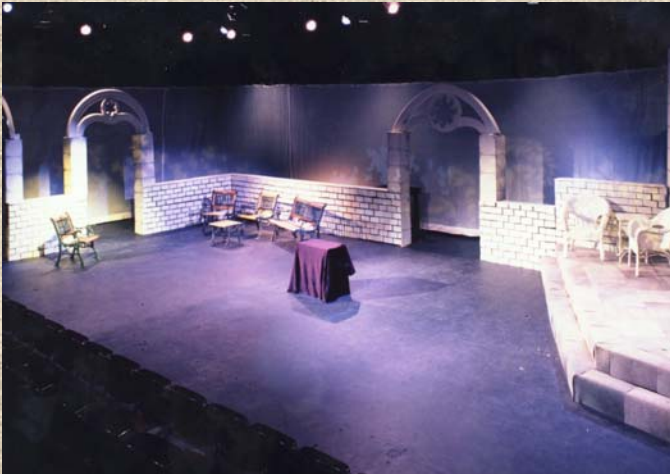
GROUND FLOOR SEATING



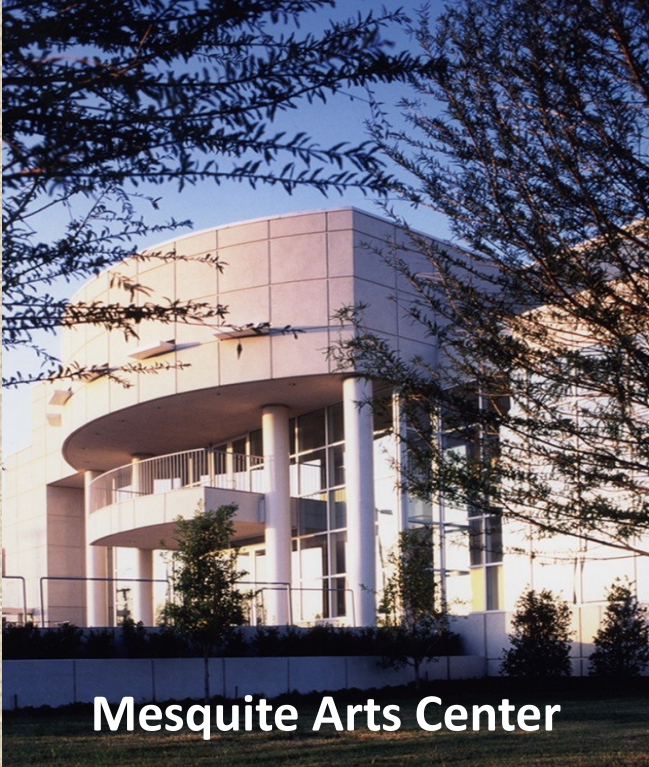
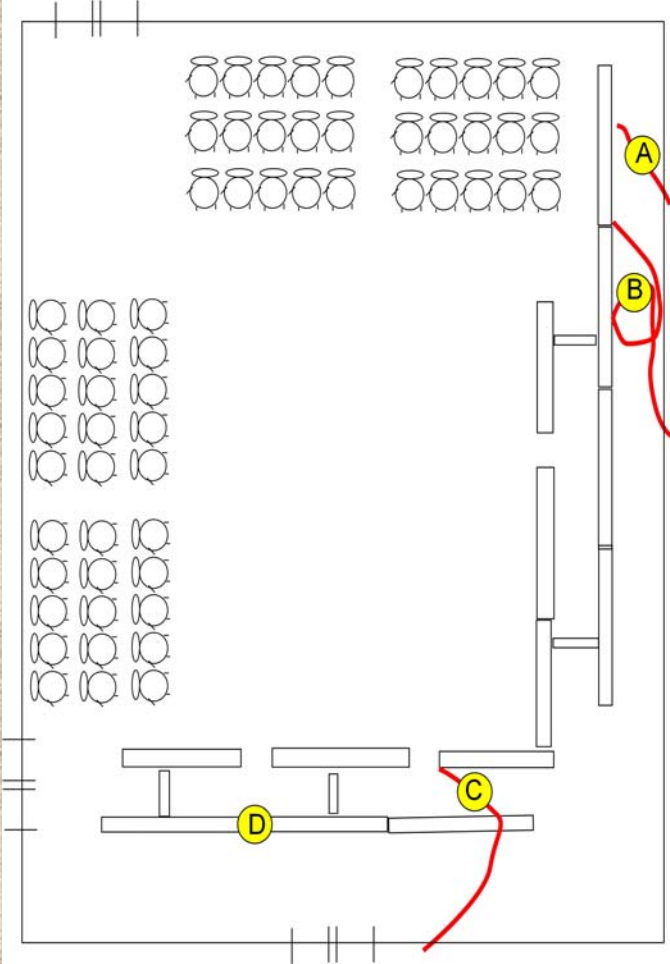
Mesquite Arts Center

BLACK BOX THEATRE SEATING PLAN

AT THE MESQUITE ARTS CENTER



SEATING FOR 50 TO 120



Mesquite Arts Center