

**CITY OF MESQUITE - REQUIREMENTS FOR  
COMMERCIAL SOLID WASTE CONTAINER  
LOCATION, SCREENING AND PAD CONSTRUCTION**  
Updated: December 10, 2008

**Commercial Solid Waste Service:**

The City of Mesquite has an exclusive franchise contract with a private solid waste collection company to be the sole commercial solid waste service provider for all non-residential trash collection in the City of Mesquite. All non-residential and apartment properties shall provide solid waste container and/or compactor pads as directed by the City and these shall be located screened and constructed to the following requirements.

**Dumpster Location and Orientation Requirements:**

1. The solid waste container pad and/or the solid waste container shall not be located within the required front or side building line.
2. The solid waste container and enclosure shall be located and oriented to prevent direct viewing inside the enclosure from streets and residential districts. This solid waste container pad enclosure opening shall be oriented so that the container is not visible at an angle of greater than 45 degrees from adjacent streets.
3. A solid waste collection truck drive path must be identified on the site plan. This path must have a minimum width of 14-feet, and a minimum outside turning radius of 52-feet. A minimum space of 50-feet of uninterrupted and unimpeded space shall be provided in front of the solid waste container enclosure (measured from the solid waste container pad enclosure opening).
4. The area immediately in front of the solid waste container enclosure (as measured from the opening of the solid waste container enclosure) shall have a 50-foot long by 14-foot wide by 24-foot high area that is clear of obstructions, including overhead obstructions such as electrical power cables, overhead canopies, etc.
5. The solid waste collection truck drive path must require no more than 50-feet of backing by the truck to service the solid waste container and exit the site to a public street or alley. The solid waste collection truck drive path cannot require the truck to back-out onto a public street.
6. The City's Manager of Solid Waste (972-216-6922) must approve the proposed location of the solid waste container.

**Concrete Pad and Enclosure Requirements:**

7. The solid waste container pad shall be a minimum of 20'-6" long by 14' wide (12-foot wide minimum internal dimension for the screening enclosure).
8. The solid waste container pad shall be constructed of 7" thick concrete (3,600 psi) reinforced with No. 4 steel reinforcing bars on 18" centers (both ways).
9. The solid waste container pad shall be poured with a 2% slope to prevent water from ponding within solid waste container enclosure.
10. The interior of the solid waste container enclosure shall have three bollards installed with one-foot clearance from the inside rear of the enclosure. The bollards shall be 6-inch diameter schedule 40 steel pipe (0.28" wall thickness), filled with concrete. The bollards shall be 8-feet in length with 3-feet buried below ground in an 18-inch diameter concrete filled hole and 5-feet above ground. The bollard shall be painted yellow.
11. The minimum inner dimension of the solid waste container enclosure opening must be 12-feet wide by 10-feet deep.

**Screening Requirements:**

All solid waste container pads must be screened on three sides by a minimum 7-foot high reinforced concrete or solid reinforced masonry wall that is faced on the exterior with a material that is compatible in material and color with the main structure(s) on the site and in conformance with the City of Mesquite **Zoning Ordinance and Community Appearance Code**.

All solid waste container pads must be equipped with gates if the screened enclosure opening can be seen from a public street. If gates are installed, both gates must have stops to hold gates open during servicing, per these City General Design Standards. Gates must be constructed to the material and aesthetic requirements of the **Community Appearance Code**.

**Miscellaneous Dumpster Enclosure Requirements:**

Accessibility to the container must be provided for solid waste vehicles at all times. The container pad should not be located where delivery vehicles load and unload and shall not be obstructed by parked vehicles.

Solid waste container enclosures are for exclusive use of City approved solid waste container storage. No other items including but not limited to pallets, waste oil storage, drums, boxes, recyclable materials, mop buckets, etc. shall be stored within the container enclosure. The City and the City's commercial solid waste service company franchisee (Allied Waste Services) shall not be responsible for damage to any unauthorized items stored inside the enclosure.

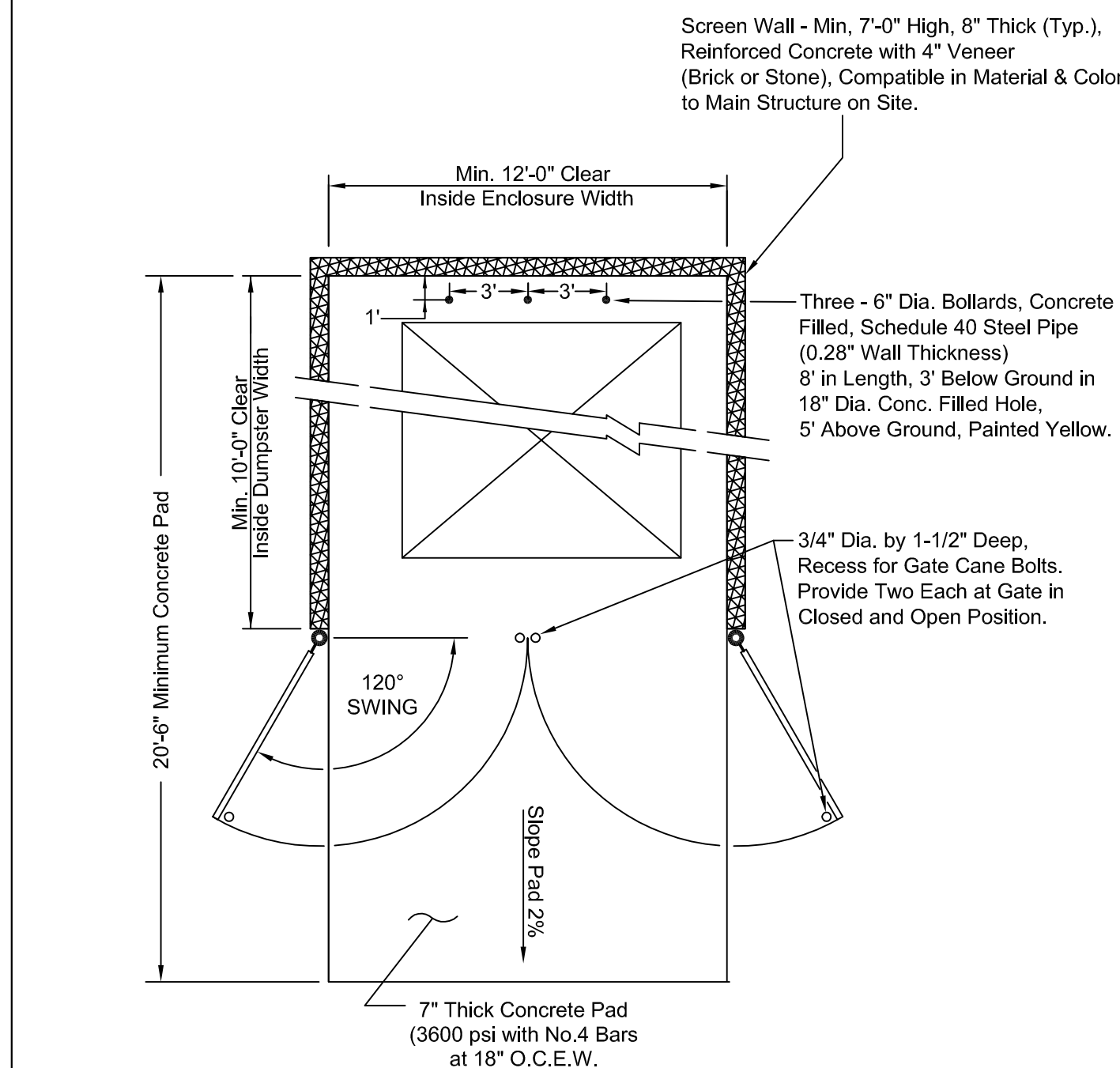
The property owner or tenant is solely responsible for opening and firmly securing gates in the open position prior to scheduled solid waste pickup. Sanitation drivers will not open gates or service solid waste containers where the gates have not been opened and firmly secured. The City and the commercial solid waste service company are not responsible for damage to improperly secured gates.

**Commercial Solid Waste Service:**

The City commercial solid waste collection company franchisee (Allied Waste Services) is the sole provider of commercial solid waste service for all non-residential trash collection in the City of Mesquite.

For service information and container delivery, please contact:

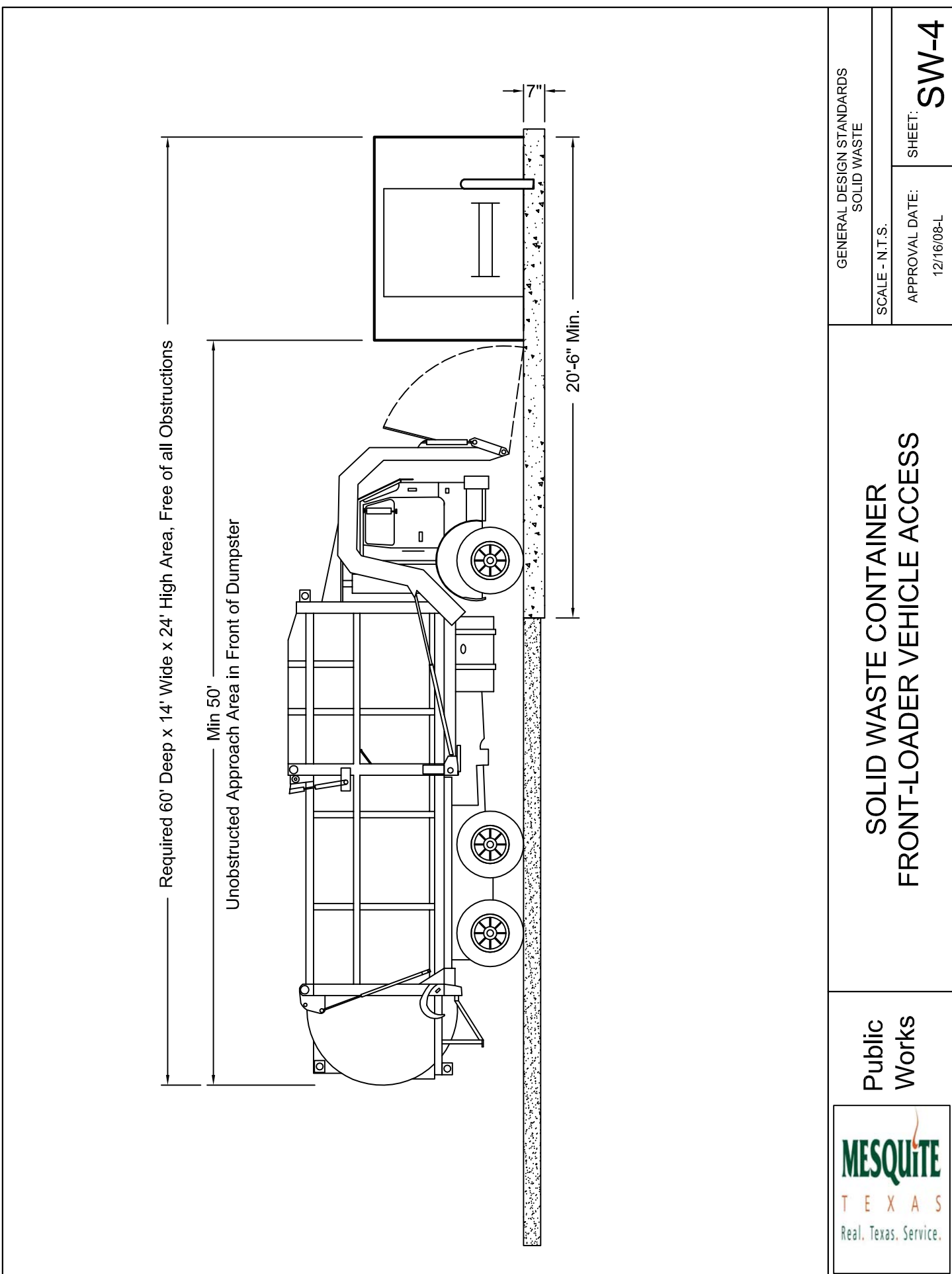
Allied Waste Services  
District Manager  
1450 E. Cleveland Street  
Hutchins, Texas 77514-9317  
Telephone: 972-225-4207



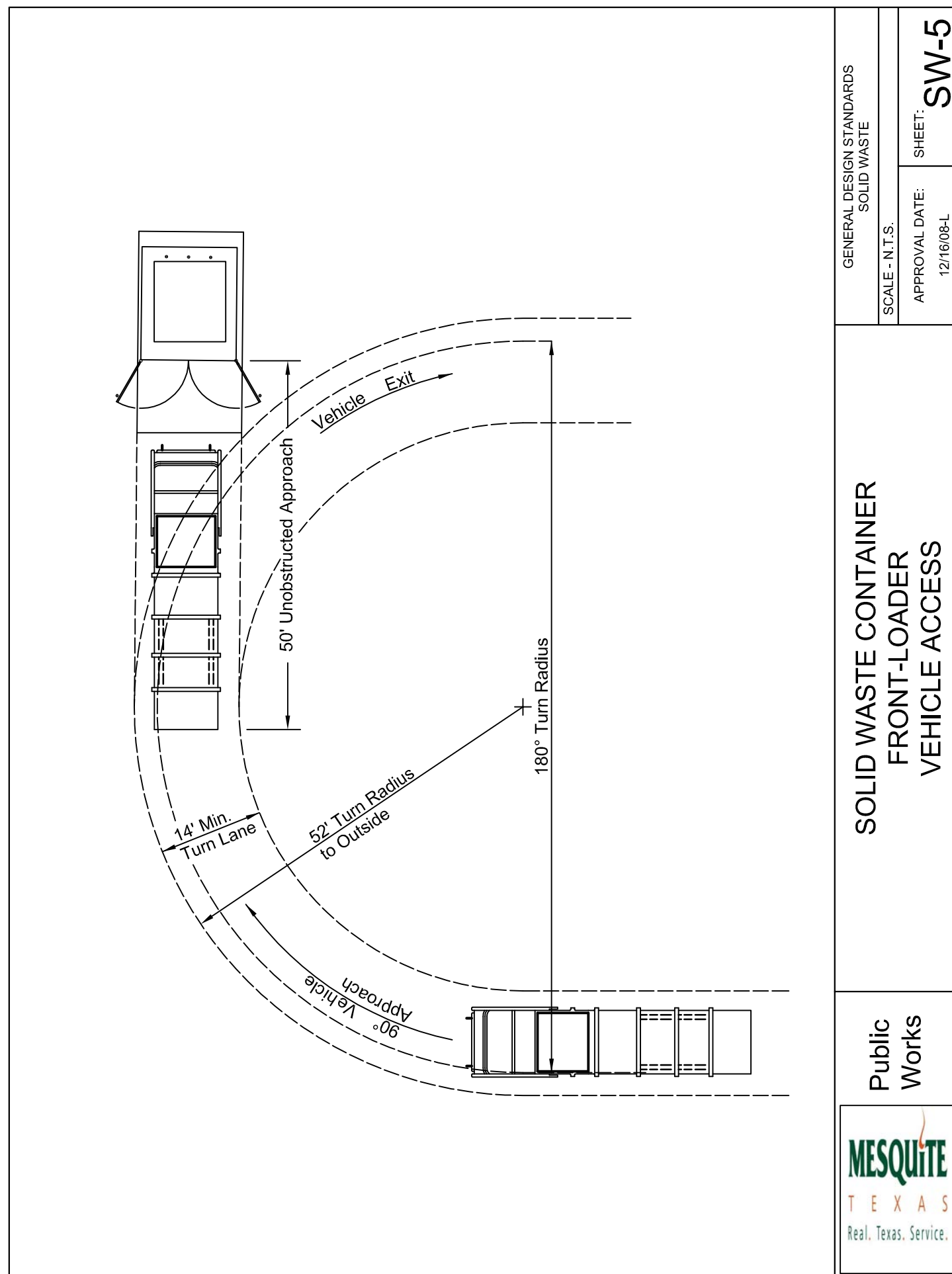
	Public Works	SOLID WASTE CONTAINER GENERAL NOTES	GENERAL DESIGN STANDARDS SOLID WASTE	
			SCALE - N.T.S.	SHEET: SW-1
APPROVAL DATE: 12/16/08-L				

	Public Works	SOLID WASTE CONTAINER GENERAL NOTES	GENERAL DESIGN STANDARDS SOLID WASTE	
			SCALE - N.T.S.	SHEET: SW-2
APPROVAL DATE: 12/16/08-L				

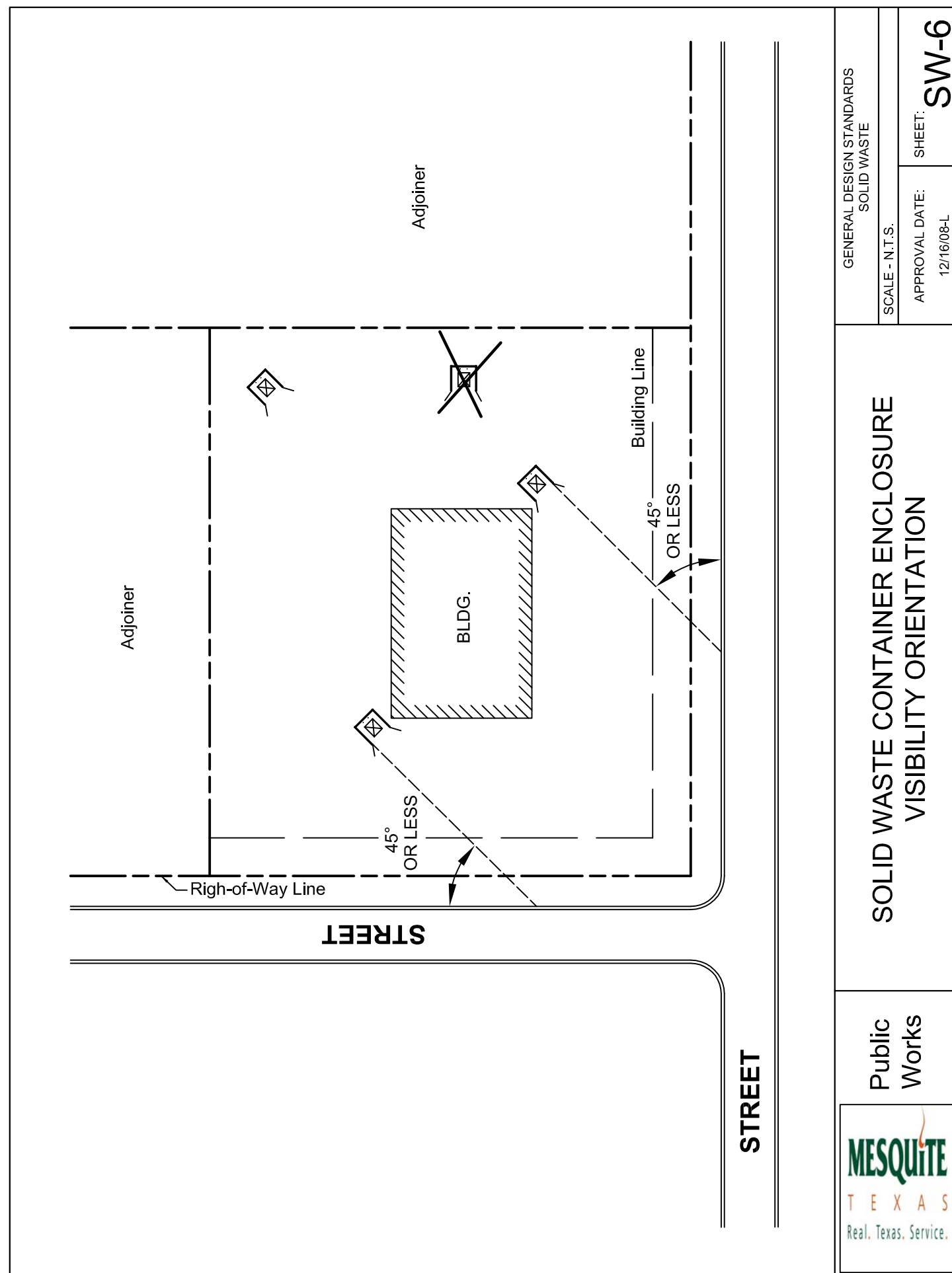
	Public Works	SOLID WASTE CONTAINER PAD DETAIL	GENERAL DESIGN STANDARDS SOLID WASTE	
			SCALE - N.T.S.	SHEET: SW-3
APPROVAL DATE: 12/16/08-L				



	Public Works	SOLID WASTE CONTAINER FRONT-LOADER VEHICLE ACCESS	GENERAL DESIGN STANDARDS SOLID WASTE	
			SCALE - N.T.S.	SHEET: SW-4
APPROVAL DATE: 12/16/08-L				



	Public Works	SOLID WASTE CONTAINER FRONT-LOADER VEHICLE ACCESS	GENERAL DESIGN STANDARDS SOLID WASTE	
			SCALE - N.T.S.	SHEET: SW-5
APPROVAL DATE: 12/16/08-L				



	Public Works	SOLID WASTE CONTAINER ENCLOSURE VISIBILITY ORIENTATION	GENERAL DESIGN STANDARDS SOLID WASTE	
			SCALE - N.T.S.	SHEET: SW-6
APPROVAL DATE: 12/16/08-L				

REVISION TABLE			SOLID WASTE CONTAINER ENGINEERING DIVISION		
NO.	REVISION	DATE	GENERAL DESIGN STANDARDS		
			City of Mesquite, Texas		
			APPROVAL DATE	SCALE	DRAWN BY
			12/16/08-L	N.T.S.	NCJ